



GOLDFIELD

Ideal for gold nugget prospecting in mineralised goldfield locations.

GENERAL



Can't decide which Mode to use? Use the General Mode for your detecting location.



BEACH

Perfect for all salty conditions — dry sand, wet sand, surf and underwater.

GENERAL



CONDUCTORS



DEEP



CONDUCTORS



SURF & SEAWATER



ALL-TERRAIN

Great for high-trash recreational areas, fields and historical locations including most general detecting.

GENERAL



FAST



CONDUCTORS



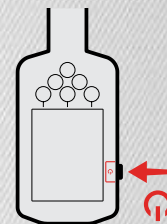
CONDUCTORS



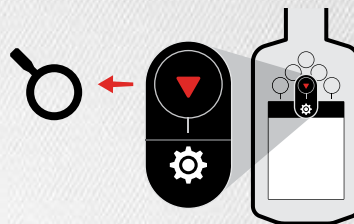
CONDUCTORS



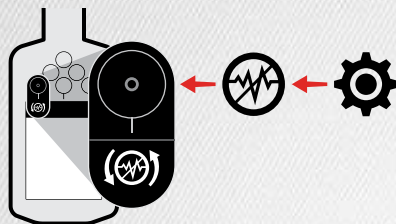
SEARCH MODES



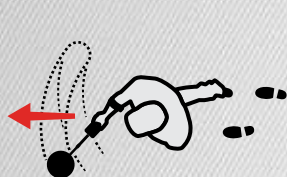
1
TURN ON



2
SELECT SEARCH MODE



3
CANCEL NOISE



4
GO DETECTING

QUICK START



Scan the QR code or visit www.minelab.com/manticore for all product downloads including the full-length User Manual, specifications, software updates and learning resources.

Get these languages and more:

- EN English
- FR français
- PT Português
- DE Deutsch
- JP 日本語
- RU русский
- ES Español
- KO 한국어
- ZH 中文

For product compliance information:

Settings > General Settings > Compliance

minelab.com

4901-0315-1

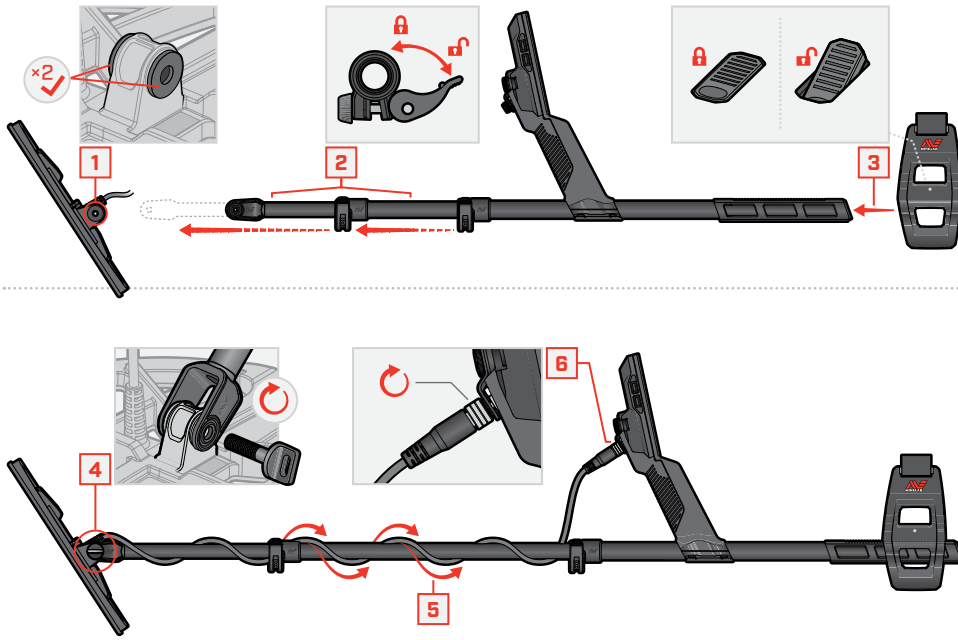


MANTICORE[®]

GETTING STARTED GUIDE



ASSEMBLY



TIGHTEN CAMLOCKS

Tighten the Camlocks if they slip or become loose.



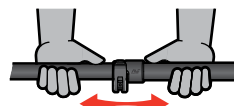
Open



Tighten gently in increments



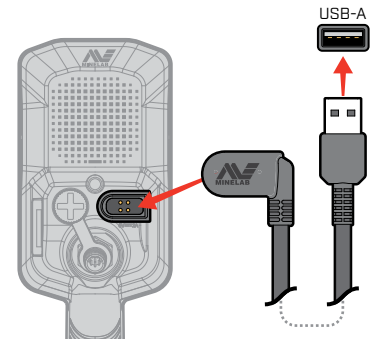
Close



Check and repeat if needed

CHARGING

7-8 HOURS



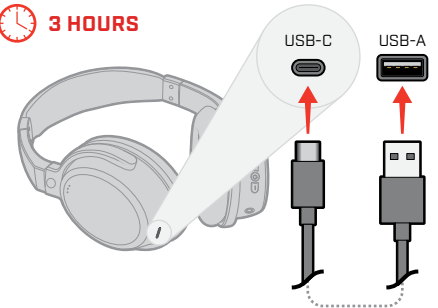
CAUTION: Charge your detector with a good-quality USB charger that has a minimum charging capacity of 2 A @ 5V. Risk of USB charger failure if a low-quality charger is used.

Look for the following marks on USB chargers:



CAUTION: Only charge the detector in ambient temperatures between 0°C and +40°C.

3 HOURS



CONTROLS & DISPLAY



SETTINGS MENU

Press **▲** from the Detect Screen to open the Settings menu.



Back

- General Settings
- Frequency
- Audio Theme
- Target Tones
- Ferrous Tones
- Ferrous Limits
- Discrimination Pattern
- Recovery Speed
- Ground Balance
- Noise Cancel
- Search Mode
- Volume

Flashlight

MINELAB

Tracking Ground Balance

Wireless Audio

Light Sensor

Headphones Connectivity

Battery Level/Charging

Target ID Number

88 Conductive ID

88 Conductive ID with Ferrous Indicator

00 Salt Indicator (Beach Modes only)

Wireless Audio On/Off

Target Depth Indicator

Side Soft Key

ID MAP

Ferrous Limits

Target Trace (e.g. nail)

Discrimination Pattern

Target Trace (e.g. coin)

More Ferrous

Less Ferrous

0 Target ID Scale Conductivity

99

Navigation Arrows (x4)

MANTICORE

Multi-IQ

Charge Status LED

Large Metal Overload

Search Mode

Frequency

Power

Sensitivity Level

Backlight/Lighting

Action Bar
Actions/icons change depending on settings or the current screen

Action Bar Soft Keys (x2)

Sensitivity
Press **◀/▶** from the Detect Screen to adjust Sensitivity

Pinpoint
Press **▼** from the Detect Screen to toggle Pinpoint mode